

## Considerations for Location:

- Convenience of use
- Proximity to auxiliary multimedia equipment
- Proximity to electrical outlet
- Routing of speaker wires and sensor cable

## List of Materials:

- Assembled wall mount cabinet (WC-400)
- Template for screw mounting location
- 4 ea. Self drilling drywall anchors with screws



1. Tape template on wall and ensure that it's level.



2. Install drywall anchors (4) and screws (4). Tighten screws within 1/16" of anchor.



3. Position cabinet and slide onto screws. Tighten screws if required.



4. Place the amplifier power supply into the cabinet. Route plug through bottom hole.



5. Place power supply in holding slot inside of cabinet.



6. If external, route auxiliary cables (not provided) up through bottom.



7. Plug in microphone charger power supply into AC outlet, then route charger cable up through bottom hole.



Option B: Some TeachLogic amplifiers have a 5V USB port to accept mic charger cable.



8. Plug in speaker connectors, sensor cable, power cable and auxiliary cables.



9. Carefully slide amplifier into cabinet making sure cables aren't smashed or disconnected.



10. Plug charger cable into charger and place charger on cover.



11. Wire tie cables or install in wire-mold for tidy installation.

6 5/8"

TOP

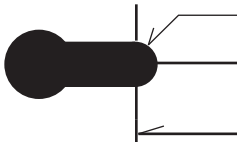
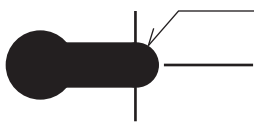
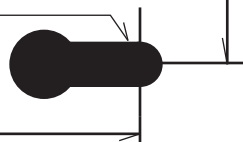
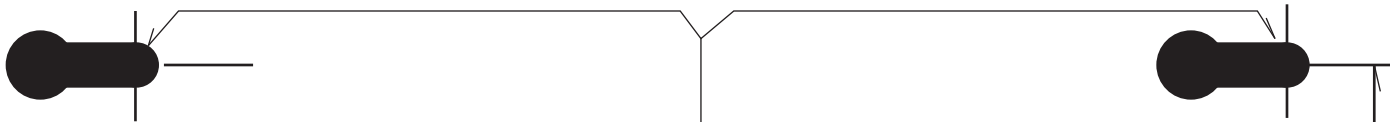


# Template

WC-400 Wall Mount

Drywall Anchors

6"



Rear Panel Opening  
for in Wall Installation

