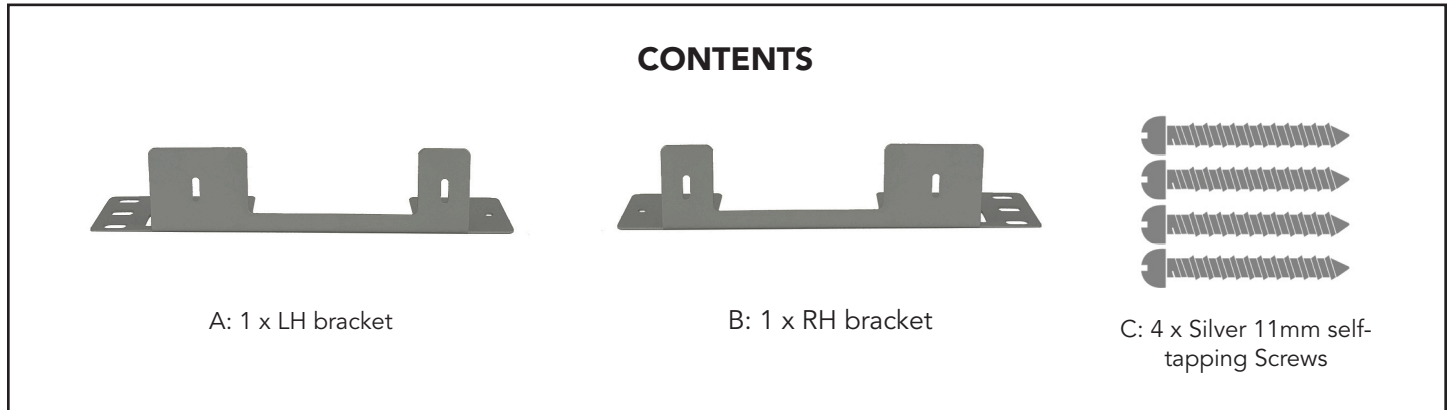
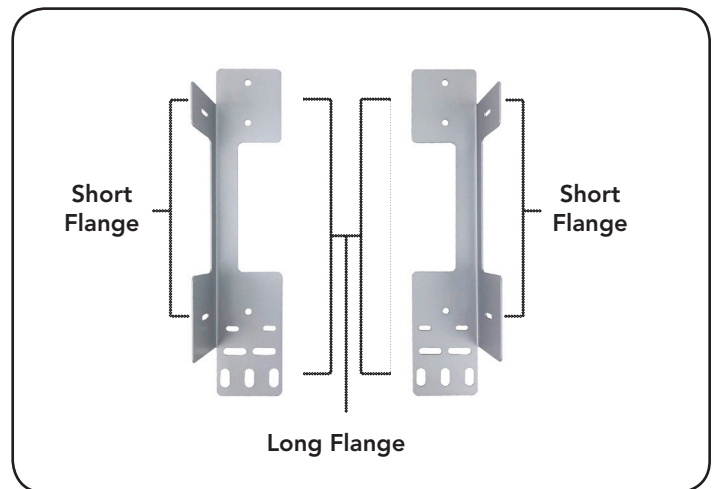
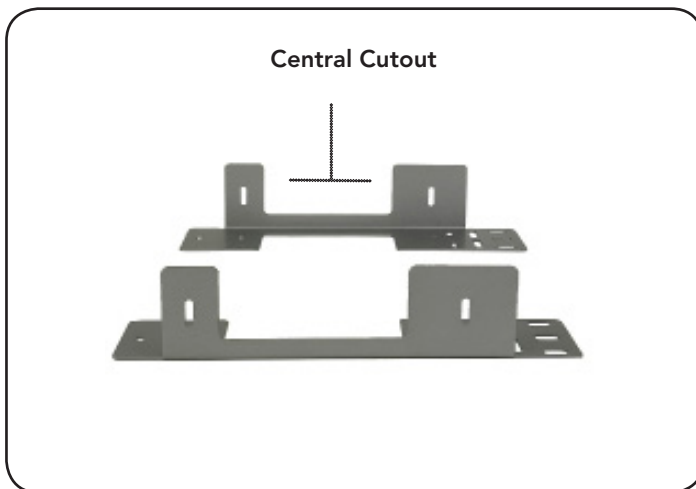


Use the brackets to secure a TeachLogic® amplifier/receiver to a wall or a flat surface above or below the amplifier. The pair of brackets may be used in a manner that allows for quick installation, or one that conceals the bracket behind the amplifier with minimal visibility.



**Note:** The two brackets are mirror images of one another. Each bracket has a longer side and a shorter side. These are referred to as the “long flange” and the “short flange”.

The “central cutout” in both flanges is provided so that the ventilation slots in the amplifier case are not blocked.



**CAUTION**



SUPPLIED ARE FOUR SILVER SELF-TAPPING SCREWS THAT WILL REPLACE THE FOUR SILVER SCREWS THAT HOLD THE METAL AMPLIFIER CASE ONTO THE PLASTIC AMPLIFIER CHASSIS. THE SUPPLIED SCREWS ARE LONGER THAN THE ONES BEING REPLACED.

**DO NOT USE ANY OTHER SCREWS** AS THEY MAY DAMAGE THE ELECTRONICS INSIDE AND/OR THEY MAY NOT ADEQUATELY ENGAGE THE PLASTIC CHASSIS AND SECURE IT IN PLACE.

**ALWAYS UNPLUG THE AMPLIFIER FROM ITS POWER SUPPLY PRIOR TO INSTALLATION.**

# INSTALLATION

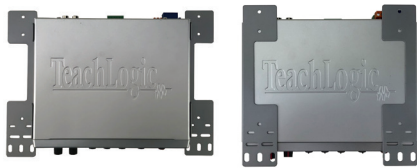
## SM-401 Shelf Mount Bracket



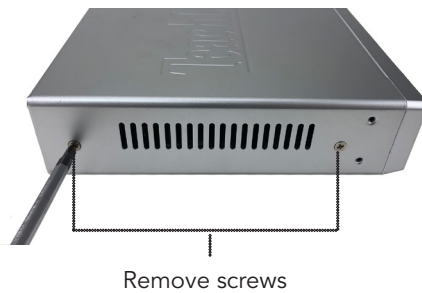
**THERE ARE MULTIPLE METHODS TO MOUNT THE SM-401 BRACKETS. TAKE CARE TO DETERMINE THE ORIENTATION THAT BEST SUITS YOUR NEED PRIOR TO STARTING. ALWAYS UNPLUG THE AMPLIFIER FROM ITS POWER SUPPLY PRIOR TO INSTALLATION.**

**QUICK MOUNT METHOD.** This is ideal for most applications. The amplifier can be mounted above or below the mounting surface such as a desk, shelf, or wall. The long flange can be faced away from, or toward the amplifier, and can be its top or bottom.

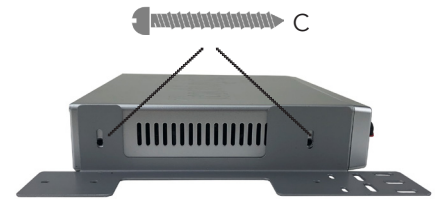
1. Determine mount orientation. There are 4 variations to accommodate needs: 1. bottom/out (shown below left), 2. bottom/in, 3. top/out, 4. top/in (shown below right).



2. Remove the existing side screws that secure the amp cover to the chassis.



3. Use the 4 supplied silver 11mm self-tapping screws (C) to secure the short flange to the side of the amplifier. Then mount to the desired surface with a fastener (not supplied) at each end of each bracket.

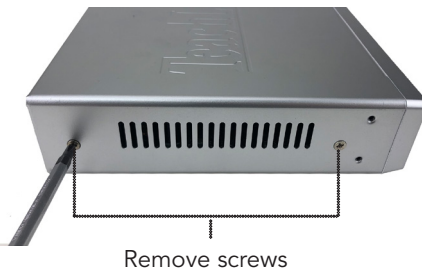


**FLUSH MOUNT METHOD.** The long flange faces in and only the 'ears' of the long flange protrude out from back of the amp. This requires the installer to pre-mark the mounting location, mount the brackets, then attach the amp to the brackets after they're securely fastened to the mounting surface.

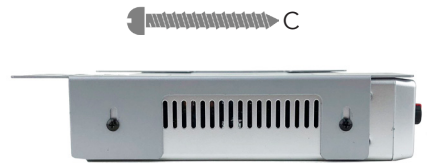
1. Determine top vs. bottom mount orientation (top mount shown).



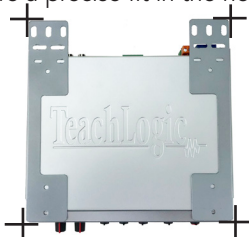
2. Remove the existing side screws that secure the amp cover to the chassis.



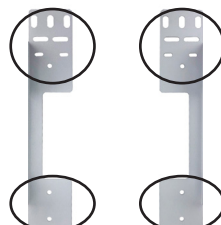
3. Use the 4 supplied silver 11mm self-tapping screws (C) to secure the short flange to the side of the amplifier.



4. Hold the amp in the desired mounting location. Using a pencil, mark 3-4 sides of the brackets on the mounting surface to ensure a precise fit in the next steps.



5. Remove brackets from amp. Align the brackets with your marks from step 4. Attach brackets to mounting location with 2 fasteners per bracket.



6. With brackets securely mounted, reattach amp to brackets with silver 11mm self-tapping screws (C).

