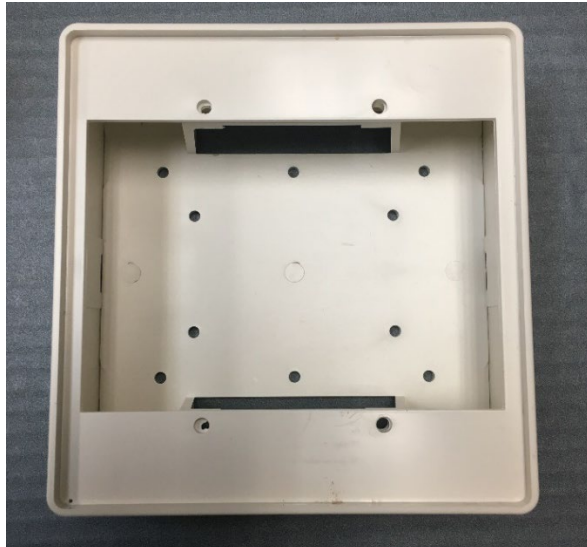


Mounting Requirements for CPR-120 Matrix Control Panel.

TeachLogic recommends mounting the control panel in the supplied rectangular surface-mount box. It may be placed over an opening the wall through which may pass the CAT5 cable to connect the control panel and the Matrix Amplifier/Receiver (IMA-120).

The box shall be screw-attached to the wall with a wire-way for the CAT5 cable. The box does not fit over a standard 1-gang box unless it is horizontally oriented.

Surface mount box is 4-7/8"W x 5"H

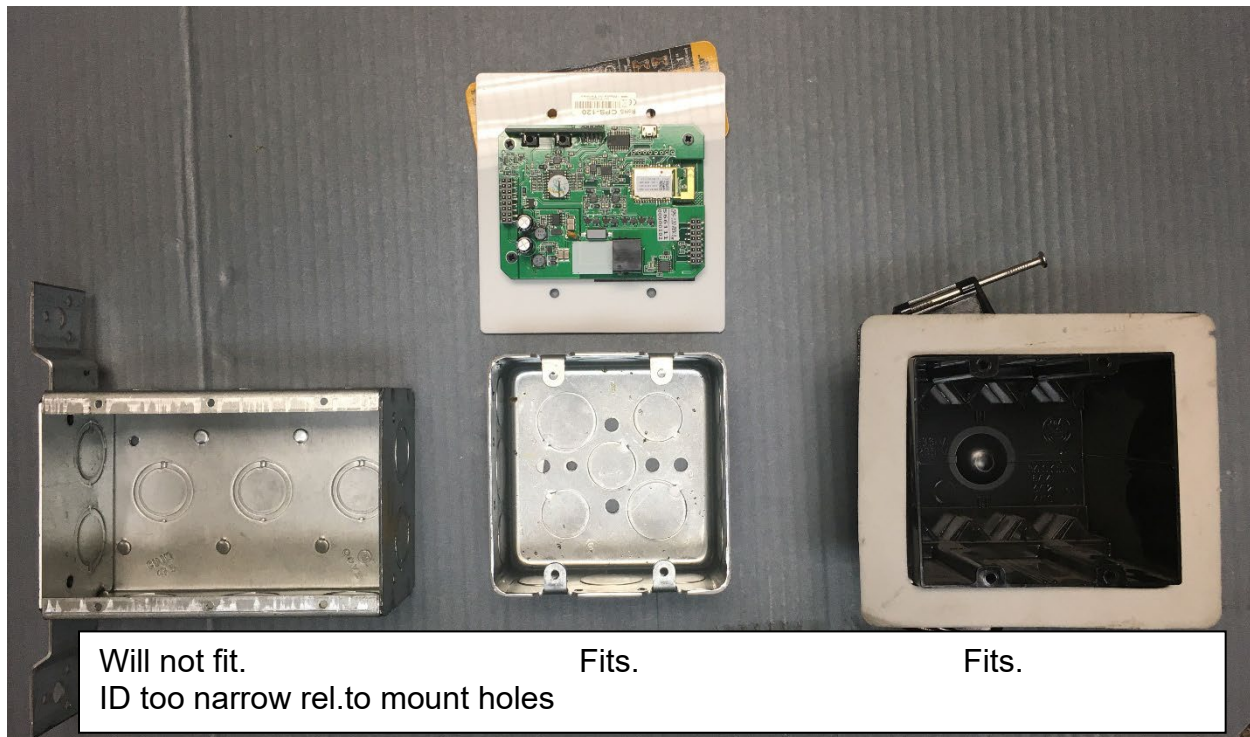




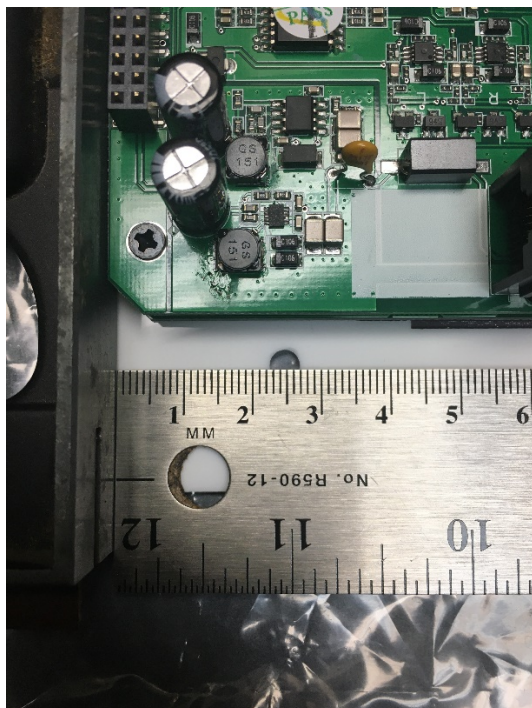
We recommend against a low voltage mounting bracket because the back side of the CPR-120 is not covered and no protection from dust or debris is afforded by such a mounting bracket.

While also not an approved installation, some users elect to mount the control panel flush instead of with the supplied box, surface mounted. In this case the box is not used, but instead a 2-gang switch box is used. If you choose this method, take care to ensure the box has the internal clearances required. Some 2 gang boxes do not.

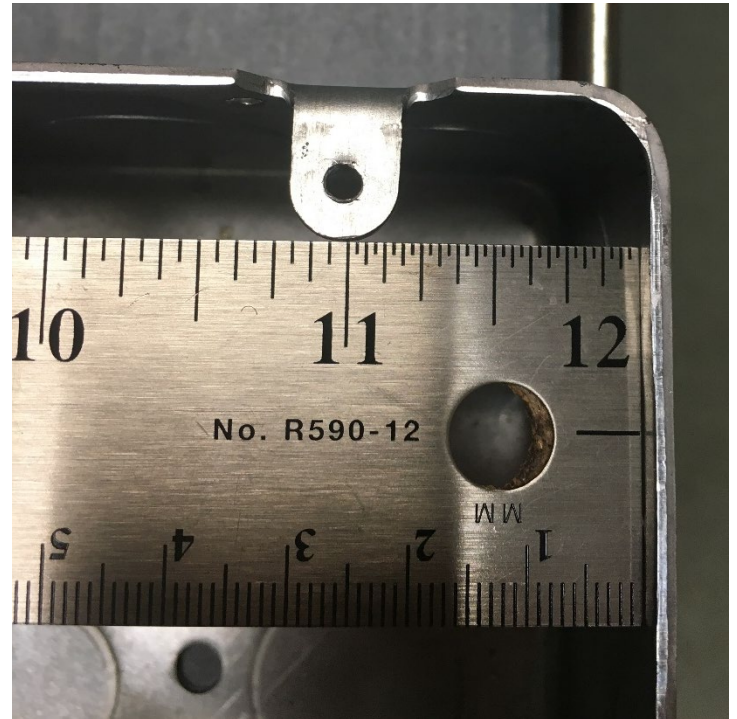
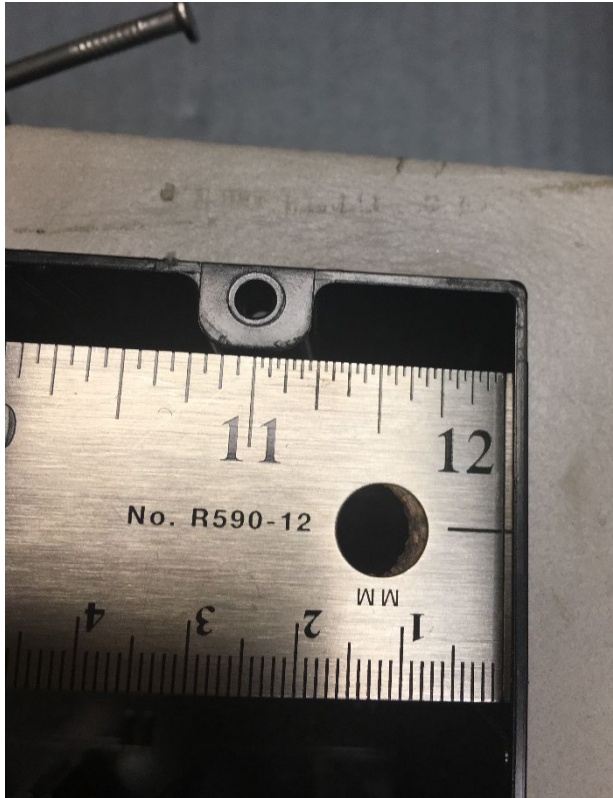




The side clearance from mounting holes in box to inside edge of box must be greater than 24.5mm (31/32 inch). An okay fit is a full 1.00 inch from center of faceplate mounting screw holes to inside edge of box.



Okay for fit; clearance at least 1.00 inch.



Not okay for fit (below). Observe box too narrow to fit circuit board. See at right edge. The fact that box is 3-gang width, the mounting holes position faceplate and circuit board as shown.



Connection cable plugs into board RJ-45 port and amplifier/receiver's RJ-45 port. Anticipate the cable path both inside the box and its route outside.

